

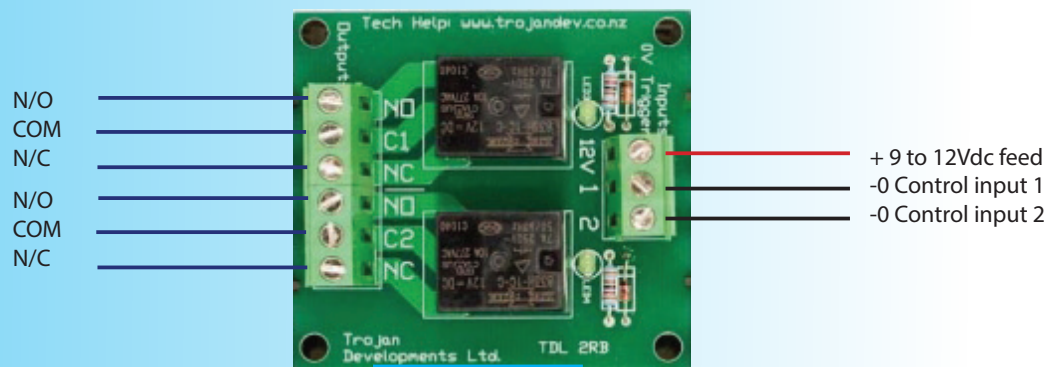
# TDL-2RB

**TROJAN**  
DEVELOPMENTS

## Two Way Relay Board

The TDL-2RB is a 2 way 8 Amp Relay Board. It has 2 x 12Vdc inputs that can switch 2 separate single pole double throw relays.

## Installation Wiring Diagram



## Specifications:

- ▼ Two way Relay Board
- ▼ Operating Voltage 9 to 16Vdc - 38mA at 13.6 Vdc per relay
- ▼ 12Vdc negative trigger input
- ▼ Two Single Pole Double Throw relays
- ▼ Contacts rated at 8 Amps AC/DC
- ▼ Dimensions: 55mm (w) x 60mm (h) x 23mm (d)

## Product code:

- ▼ TDL-2RB

▼ [www.trojandev.co.nz](http://www.trojandev.co.nz)

▼ [sales@trojandev.co.nz](mailto:sales@trojandev.co.nz)



developing innovative egress solutions since 1987